

# OPTIMINE® LOCATION TRACKING

PRODUCT SHEET

## OPTIMIZE YOUR MINING PROCESS

OptiMine® is an analytics and process optimization suite that offers a collection of digital solutions and accompanying Sandvik services targeted to improve the efficiency of your mining operations. Suitable for all underground mining applications and the entire mobile fleet, including other OEM equipment, the solution provides transparency of your underground operations and enables joint development of your mining process efficiency supported by our experts.

OptiMine® Analytics and process optimization solutions can be combined as needed to build up the required functionality. With open interfaces, the solution can be seamlessly integrated to your mine's digital ecosystem.

## TRACK YOUR FLEET IN REAL TIME

OptiMine® Location Tracking provides accurate and real-time location information for all resources, including other manufacturers' mining equipment and light vehicles, as well as personnel.

Whether in the control room or underground in the mine, with OptiMine® Location tracking, you are constantly aware of the status and location of all your resources within a 2D or 3D model of the mine.

With accurate resource location data, mining companies can drive efficiency in mining operations and unlock other capabilities when optimizing mining processes. Having real-time information of the location of resources, situational awareness is significantly improved.

Location data enables mines to quickly identify any possible traffic congestions, which translates to better productivity. Traffic awareness underground can dramatically improve safety. In case of an emergency, equipment can be immediately located, speeding up mine evacuation if needed.

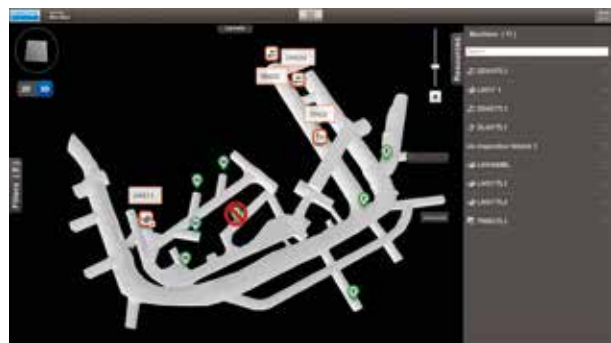


OptiMine® Location Tracking can be done by two methods:

- Sandvik location tracking unit
- Tag-based location tracking (also suitable for personnel tracking)

The OptiMine® Location Tracking Unit is a high precision laser scanner. It is a compact single-piece unit for accurate underground location tracking, which can easily be fitted for all mobile mining equipment and light vehicles.

The location tracking unit coordinates are continuously transmitted to the OptiMine® application whenever the network connection is available. Location tracking and location determination is done locally on the location tracking unit, which does not need any additional production area infrastructure. Location determination can continue to work onboard the equipment in areas without network coverage.





At the same time, mine visualization software shows the location and status of the resources in the central control room or underground with the mine visualizer tablet application. Track the location of resources online in real time as each piece of equipment is identified with a symbol on the mine layout. Authorized users can view this information anywhere, anytime.



### KEY FEATURES

Unlock capabilities with OptiMine® Location Tracking data:

- Track your resources in real time, including non-Sandvik equipment.
- Improve situational awareness and productivity
- Make decisions based on accurate and real-time location information
- Fit the high precision laser scanner hardware easily to any equipment

### BACKED BY SANDVIK

The transparency of equipment performance and health is essential in mining process optimization, and can be gained through a convenient information management system. As a global leading supplier of digital mining and automation solutions, Sandvik offers the right technology for your mining needs both today and tomorrow.

OptiMine® is the most comprehensive analytics and process optimization solution for mining operations. With OptiMine®, you can truly take the lid off of your underground mining operations, decrease costs, and increase productivity and safety.



Sandvik Mining and Rock Technology reserves the right to make changes to the information on this data sheet without prior notification to users. Please contact a Sandvik representative for clarification on specifications and options.

ROCKTECHNOLOGY.SANDVIK